

Bim Antibody
Rabbit mAb
Catalog # AP90347

Specification

Bim Antibody - Product Information

| | |
|---|------------------------|
| Application | WB, IHC, ICC, IP |
| Primary Accession | O43521 |
| Clonality | Monoclonal |
| Other Names | |
| BAM; BIM; BOD; BimL; BimS; BimEL; BIM-beta6; BIM-beta7; BIM-alpha6;BCL2L11; | |
| Isotype | Rabbit IgG |
| Host | Rabbit |
| Calculated MW | 22171 Da |

Bim Antibody - Additional Information

| | |
|------------------------------|--|
| Dilution | WB~~1:1000 IHC~~1:100~500 ICC~~N/A IP~~N/A |
| Purification | Affinity-chromatography |
| Immunogen | A synthesized peptide derived from human Bim |
| Description | Bim a pro-apoptotic member of the BCL-2 protein family. Interacts with other members of the BCL-2 protein family, including BCL2, BCL2L1/BCL-X(L), and MCL1, and act as an apoptotic activator. Its expression can be induced by nerve growth factor (NGF), as well as by the forkhead transcription factor FKHR-L1, which suggests a role in neuronal and lymphocyte apoptosis. |
| Storage Condition and Buffer | Rabbit IgG in phosphate buffered saline , pH 7.4, 150mM NaCl, 0.02% sodium azide and 50% glycerol. Store at +4°C short term. Store at -20°C long term. Avoid freeze / thaw cycle. |

Bim Antibody - Protein Information

Name BCL2L11

Synonyms BIM

Function

Induces apoptosis and anoikis. Isoform BimL is more potent than isoform BimEL. Isoform

Bim-alpha1, isoform Bim-alpha2 and isoform Bim-alpha3 induce apoptosis, although less potent than isoform BimEL, isoform BimL and isoform BimS. Isoform Bim-gamma induces apoptosis. Isoform Bim-alpha3 induces apoptosis possibly through a caspase- mediated pathway. Isoform BimAC and isoform BimABC lack the ability to induce apoptosis.

Cellular Location

Endomembrane system; Peripheral membrane protein. Note=Associated with intracytoplasmic membranes. [Isoform BimL]: Mitochondrion. [Isoform Bim-alpha1]: Mitochondrion.

Tissue Location

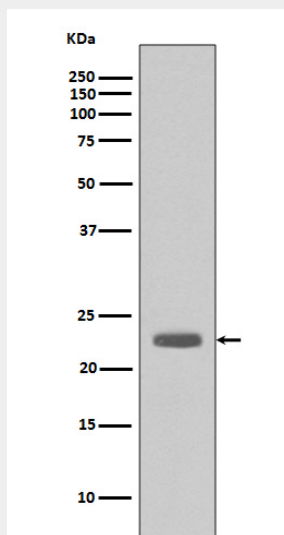
Isoform BimEL, isoform BimL and isoform BimS are the predominant isoforms and are widely expressed with tissue-specific variation. Isoform Bim-gamma is most abundantly expressed in small intestine and colon, and in lower levels in spleen, prostate, testis, heart, liver and kidney.

Bim Antibody - Protocols

Provided below are standard protocols that you may find useful for product applications.

- [Western Blot](#)
- [Blocking Peptides](#)
- [Dot Blot](#)
- [Immunohistochemistry](#)
- [Immunofluorescence](#)
- [Immunoprecipitation](#)
- [Flow Cytometry](#)
- [Cell Culture](#)

Bim Antibody - Images



Western blot analysis of Bim expression in A431 cell lysate.